

ERICKA BROWER

PORTFOLIO

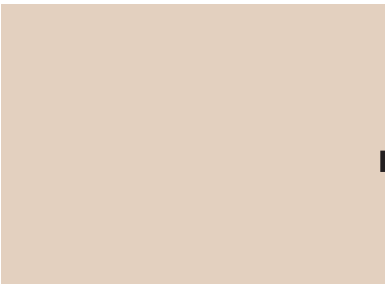
DESIGN PORTFOLIO

INTERIOR
DESIGN PORTFOLIO
2021 / 2025

PRESENTED BY

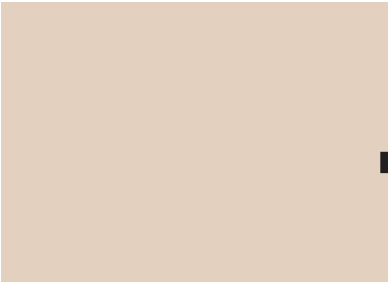
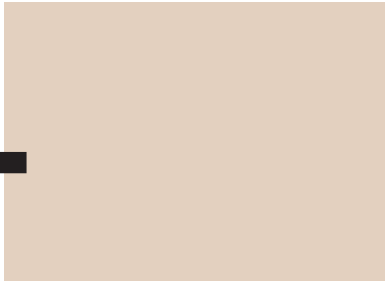
ERICKA
BROWER

INTERIOR DESIGN
SELECTED DESIGN
WORKS 2021 / 2025



01
WAITING ROOM

02
IDEC
COMPETITION



03
5530
SOUTHWESTERN
BLVD

ABOUT ME

INDEX

Thank you for exploring my portfolio. I’m an interior design student passionate about creating spaces that are both functional and meaningful. My work blends aesthetics with purpose, reflecting a strong foundation in design principles, materiality, and sustainability.

Each project in this collection represents my growth as a designer—from concept development to final execution. I hope you enjoy this glimpse into my design journey.

WAITING ROOM

The Paul M. Bass Administrative and Clinical Center

This therapy waiting room is inspired by the Dutch design theory Snoezelen, biophilia, and the prospect and refuge theory.

The Paul M. Bass Administrative and Clinical Center, is a board-certified team of psychiatrists who treat a plethora of disorders, including but not limited to Depression, Bipolar Disorder, Panic Disorder, Social Anxiety Disorder, Generalized Anxiety Disorder, Post-Traumatic Stress Disorder, Adult Attention Deficit Disorder, Alzheimer's Disease, Psychiatric Complications of Dementia, and Schizophrenia. These disorders share a common symptom: sensory processing issues.

Snoezelen is a tested and measured design theory that incorporates sensory dark rooms in order to relieve over stimulation in patients with sensory issues.

I have incorporated Snoezelen principles by including visual texture, organic patterns, a dark color palette, and sensory tools integrated into the furniture. Patients will have access to a healthy outlet for excess energy and relief from anxiety associated with medical visits.

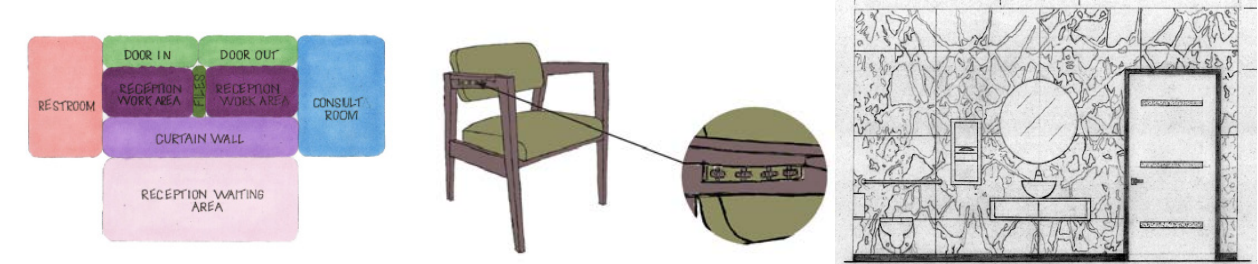
PROJECT: WAITING ROOM

BUDGET
N/A

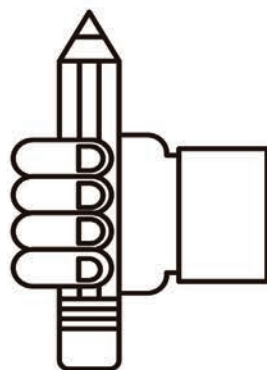
CLIENT:
UT SOUTHWESTERN
MEDICAL CENTER

IDEA & CONCEPT

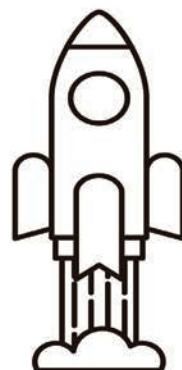
As a class we were tasked to design a medical waiting room. We were given a general floor plan and permitted to chose our own specialization and client.



IDEC COMPTITION



Mostafa's ASPECTSS™ criteria (Acoustics, Spatial sequencing, Escape spaces, Compartmentalization, Transition spaces, Sensory zoning, and Safety) provide a comprehensive framework for designing spaces suitable for individuals with ASD. Addressing sensory issues like hypersensitivity or hyposensitivity to various stimuli is crucial for establishing a calming environment that supports interaction with neurotypical peers. Flexibility in space design is vital to accommodate different needs. Customizable spaces can adapt to various functions, enhancing accessibility for individuals with ASD.



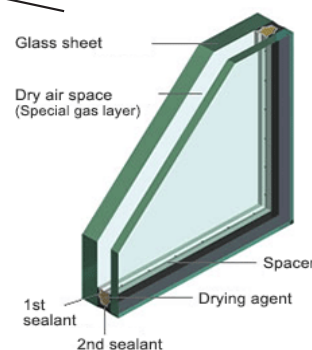
Designing quiet spaces involves considering specific sensory needs, including sensitivity to light, sound, and color, and providing flexible and adaptable environments. Research-based design includes adjustable lighting, soundproofing, acoustical comfort, room for pacing, and neutral color choices aimed at promoting a calming environment for individuals with sensory processing sensitivity based on peer reviewed medical research.



Acoustic



Felt Paneling

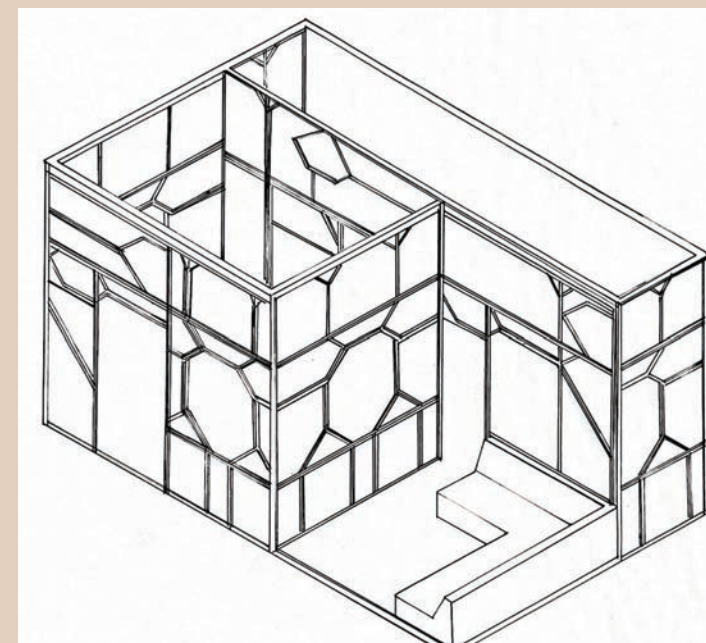


Tinted Sound Proof Glass



Canvas Upholstery

HAND DRAFTING



PROJECT: OFFICE
DESIGN

BUDGET

N/A

CLIENT: N/A

IDEA & CONCEPT

As a class we were challenged to design a conference room that aligns with graphic standards measurements while incorporating multiple

NARRATIVE

In the heart of a vibrant college campus lies the Serene Room, meticulously crafted as an oasis for individuals navigating sensory processing challenges. Research insights have woven the fabric of its design, understanding the varied needs stemming from conditions such as Autism Spectrum Disorder (ASD), anxiety disorders, ADHD, PTSD, OCD, depressive disorders, and sensory modulation issues.

This sanctuary embraces Mostafa's ASPECTSS™ criteria, molding its design with acute sensitivity to Acoustics, Spatial sequencing, Escape spaces, Compartmentalization, Transition spaces, Sensory zoning, and Safety. It champions flexibility, recognizing the diverse requirements of individuals, and adapts seamlessly to cater to varying functions.

As users step into this haven, the environment deftly addresses sensory sensitivities, providing a tranquil haven for interaction with neurotypical peers. Considerate lighting design minimizes flickering, brightness, and offers adjustable controls, accommodating light-sensitive individuals. Sound management is meticulous, curating an atmosphere with reduced echoes and optimal sound absorption to ease auditory sensitivity.

The color palette, composed of soothing neutral tones and pastel shades, orchestrates a calming symphony, fostering a serene ambiance. Within this sanctuary, distinct sensory-friendly zones offer quietude and safety, serving as havens for preparation or relaxation, not just for individuals with ASD but for a diverse range of users.

This design narrative doesn't just echo research findings; it embodies societal responsibility, urging a collaborative and empathetic approach. It emphasizes a relational perspective, echoing the importance of listening to individual experiences, fostering inclusivity in shared spaces.

The Serene Room stands as a testament to the fusion of scholarly insights and empathetic design. It's a refuge that transcends the mere physical; it embodies understanding, inclusivity, and the compassionate embrace of varied sensory experiences, ensuring a haven for all seeking respite

5530 SOUTHWESTERN BLVD

In my first professional role, I assisted with high-end residential design projects, focusing on material selection, finish coordination, and client presentations. I gained hands-on experience in managing design details, communicating with vendors, and supporting the lead designer through each project phase—from concept to construction.

PROJECT: 5530
Southwestern New
Build

BUDGET
1.5 Million

CLIENT: Martyn
Hammer Custom
Homes

IDEA & CONCEPT

Luxury Residential for
Martyn Hammer Custom
Homes



CONTACT

ERICKA
BROWER

2401 BENNETT AVE
APT 3417
DALLAS, TX 75206

+01 214 536 0022

INTERIOR
DESIGN

2020 / 2025 DESIGN
PORTFOLIO

